

Sense) (Anywhere



Wireless monitoring
of the future
available today



Wireless sensing, monitoring and control... Anywhere

SenseAnywhere leads a new generation of ultra-low-power data loggers that wirelessly connect to the Cloud. Our data loggers are easy to install, use and maintain and have a 10-year battery life.

Turn key monitoring solution



Measure
temperature



Measure
humidity



Track
motion



Monitor
CO2 levels



Secure & Redundant
Cloud Storage



Alarm users
if necessary

Applicable for all kinds of industries



Features



Alarms

Receive notifications per email or SMS when limits are exceeded



Real-time

24/7 monitoring gives you a complete audit trail of your products



Seamless Roaming

Automatic network discovery, so no pairing required



Security

The wireless communication is a secure 2-way communication



Ultra-low-power

Our unique and efficient wireless protocol allows you to receive >1 million measurements in the Cloud which means a 10-year battery life



Interactive display

By scanning the device's unique QR code you can immediately view your data in the Cloud

And it is very easy!

Easy to install



Register + connect = ready!



Takes less than 10 minutes



No cables or software

Easy to use



Cloud based



For all industries



Accessible from any device

Easy to maintain



No back-ups



No maintenance



Lifetime battery

You can access data and edit the settings of your data loggers in the SenseAnywhere Client portal.

Our software and data storage are FDA Compliant and the software is continuously being extended with features.

In the portal you are able to: manage settings, view graphs and data, set alarm profiles, schedule and download reports and many more.

Software tailored to your needs

Standard

- ✓ Web-based software
- ✓ Cloud-based infrastructure
- ✓ Triple redundant database
- ✓ FDA 21 CFR part 11 compliant
- ✓ Data Storage Period 5 years
- ✓ 10 users
- ✓ Scheduled reports

Pro

MOST POPULAR

- ✓ Standard subscription features
- ✓ Data Storage Period 10 years
- ✓ 25 users
- ✓ Generate reports on demand
- ✓ Transport alarm: trip ok/not ok
- ✓ Scheduled alarm profiles

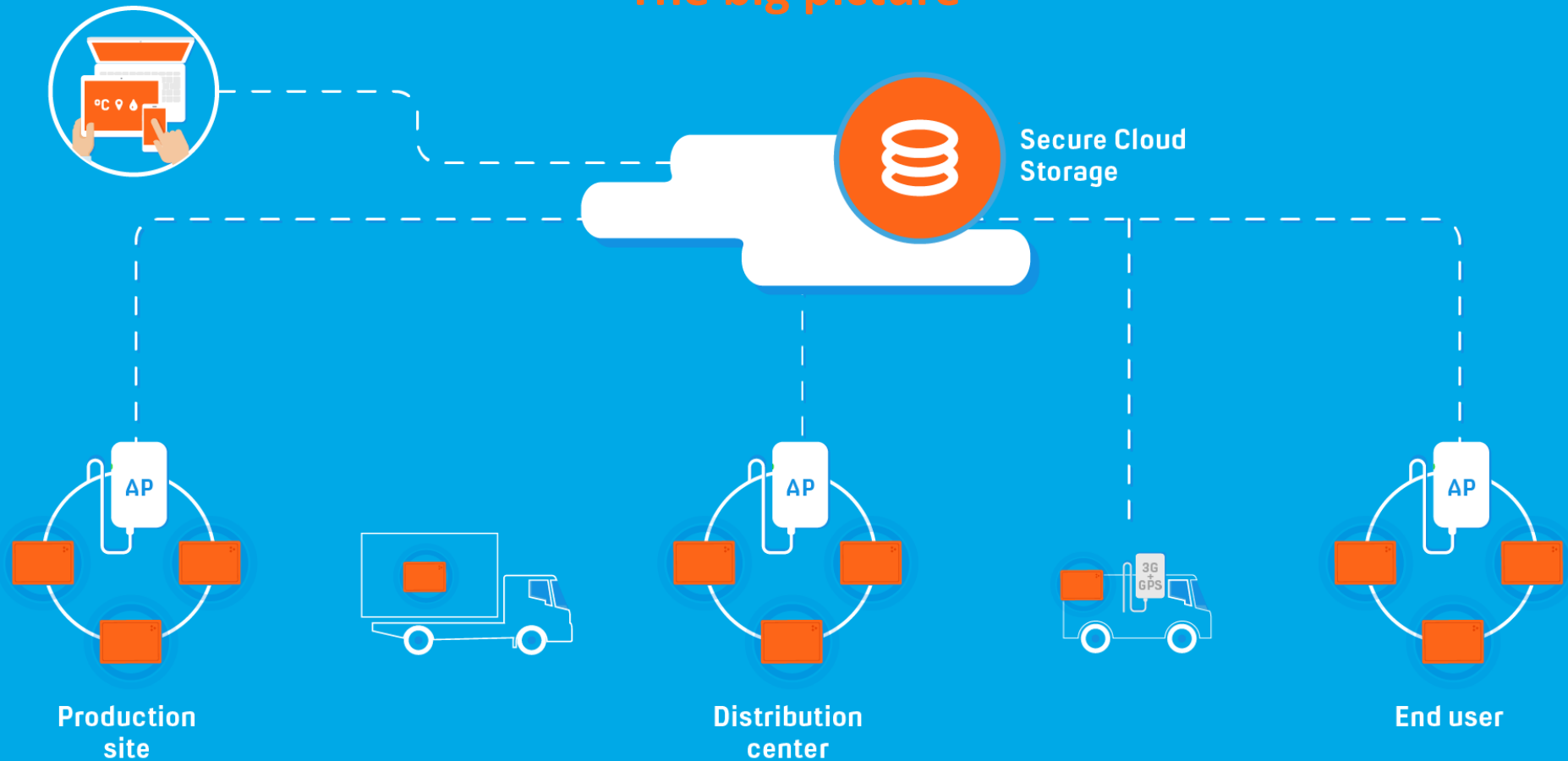
Enterprise

BEST VALUE

- ✓ Standard+Pro subscription features
- ✓ Data Storage Period 15 years
- ✓ Unlimited users
- ✓ Hierarchical divisions

Different customers have different needs and in addition to our extensive Standard subscription with many features, we also have a Pro and Enterprise subscription with even more features and functionalities. SenseAnywhere offers tailored subscriptions for every company.

The big picture



Goods are monitored all the way from production until consumption

A data logger stays in the package throughout the whole distribution chain. Seamless roaming allows the data logger to transfer its data real-time at any location where a SenseAnywhere (mobile) AccessPoint is deployed. All data is stored securely in the Cloud and you can access it from any smart device.

Our products



Motion



Motion



Temperature



Humidity



Sense) (Anywhere



Next generation Cloud-based data loggers

SenseAnywhere leads a new generation of ultra-low-power data loggers that wirelessly communicate and store data in the Cloud. They are easy to install, use and maintain and have a 10-year battery life. Installs in minutes and lasts a lifetime.

Turn key monitoring solution



Measure temperature



Measure humidity



Track motion



Monitor CO2 levels



Redundant Cloud storage



Alarm users if necessary

Seamless roaming

Automatic network discovery throughout the distribution chain

Real-time

24/7 monitoring provides you with a complete audit trail

Reliable

Your data is stored in a real-time triple redundant database

Interactive display

By scanning the QR code you can instantly view your data

Ultra-low-power

Our unique design enables 10-year battery life

Alarms

Receive notifications per email or SMS when limits are exceeded

Applicable for both static and mobile purposes



SenseAnywhere B.V.

Emmerblok 18 | 4751 XE Oud Gastel | The Netherlands

+31 165 560 088 | info@senseanywhere.com | www.senseanywhere.com

Monitor temperature, humidity and motion

Meet our AiroSensors

 **10 years**
battery lifetime

 **1,000,000**
measurements

 **18,500 events**
logging capacity



Temperature
Accurate temperature and humidity sensor.



Motion
The accelerometer is used to detect motion or shock.



Location
Arrival and departure times are automatically logged.



Realtime
24/7 data gives you a complete audit trail.



Instant alarms
Get notified via email or text when limits are exceeded.



Secure data storage
Access your data anywhere and anytime via the Cloud.

Product Description

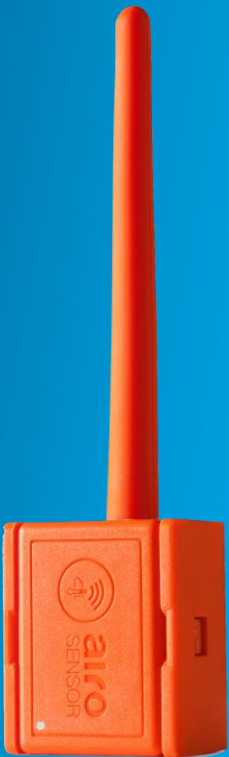
The SenseAnywhere AiroSensor is a very compact, accurate and robust wireless data logger for temperature, humidity and motion. This data logger communicates with and stores data in the Cloud. The product is easy to install, use and maintain! Its ultra-low power design allows up to 10 years of operation without maintenance. AiroSensor 20-20-25 can transmit wirelessly up to 600 meters (line of sight) to an AccessPoint. Perfectly suited to monitor rooms, refrigerators, cold stores and incubators.

Applicable in various industries



AiroSensors

Wireless Frequency	ISM Band, 868 MHz (ITU Region 1) or 915MHz (ITU Region 2)			
Wireless Protocol	SenseAnywhere wireless protocol with automatic service discovery and seamless roaming			
	Model 20-20-24		Model 20-20-25	
Range	Up to 100m / 300 ft outdoors		Up to 600m / 2000 ft outdoors	
Logging capacity	18.500 events with date / timestamp			
Battery Life	Up to 10 years or 1 million messages			
Temperature	Operating range -30°C to 70°C Accuracy Typ. ±0.3°C Max. ±0.4°C (-10°C to 70°C) Max ± 0.5°C (-30°C to -10°C) Long term stability ≤ 0.01°C /year		-22°F to 158°F Typ. ±0.54°F Max. ±0.72°F (14°F to 158°F) 0.018°F/year	
Humidity	Operating range 0 – 100% RH non-condensing. Accuracy Typ. ±2% RH, Max. ±3% RH (0 – 80% RH), Max. ±4.5% RH (80-100% RH) Long term stability: ≤ 0.25% RH/year			
Motion detection	Accelerometer 3-axis, sensitivity 0g – 16g, programmable			
Magnet switch	Detect removal from and insertion into holder Enable or disable alarm (with SwitchHolder) Start or Stop of transport report (with SwitchHolder)			
Compatibility	EN12830 class 1, storage & transport, Climatic environment type: D CE, EN300328, EN55022 (868 MHz) FCC, IC (915 MHz)			
Mounting	The holder is pre-fitted with very high bond double sided tape and two stainless steel screws are supplied for mounting in very harsh environments or on rough surfaces. Try to avoid mounting on metal surfaces, reinforced concrete walls, inside metal racks or cabinets.			
Casing Material	PC-ABS, easy to clean surface			
Protection class	IP62			
Accessories	SwitchHolder			
	Model 20-20-24		Model 20-20-25	
Dim.	Sensor	with holder	Sensor	with holder
Height	41mm / 1.61"	41mm / 1.61"	131mm / 5.15"	131mm / 5.15"
Width	32mm / 1.26"	33mm / 1.30"	32mm / 1.26"	33mm / 1.30"
Depth	22mm / 0.87"	24mm / 0.94"	22mm / 0.87"	24mm / 0.94"
Weight	32g	40g	37g	45g



Monitor temperature and motion

Meet our AiroSensors

 **10 years**
battery lifetime

 **1,000,000**
measurements

 **18,500 events**
logging capacity



Temperature
Accurate temperature sensor.



Motion
The accelerometer is used to detect motion or shock.



Location
Arrival and departure times are automatically logged.



Realtime
24/7 data gives you a complete audit trail.



Instant alarms
Get notified via email or text when limits are exceeded.



Secure data storage
Access your data anywhere and anytime via the Cloud.

Product Description

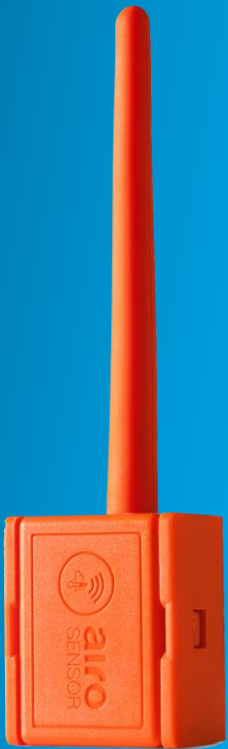
The SenseAnywhere AiroSensor is a very compact, accurate and robust wireless data logger for temperature and motion. This data logger communicates with and stores data in the Cloud. The product is easy to install, use and maintain! Its ultra-low power design allows up to 10 years of operation without maintenance. AiroSensor 20-20-31 can transmit wirelessly up to 600 meters (line of sight) to an AccessPoint. Perfectly suited to monitor rooms, refrigerators, freezers, cool trailers, cool boxes and incubators.

Applicable in various industries



AiroSensors

Wireless Frequency	ISM Band, 868 MHz (ITU Region 1) or 915MHz (ITU Region 2)			
Wireless Protocol	SenseAnywhere wireless protocol with automatic service discovery and seamless roaming			
	Model 20-20-30		Model 20-20-31	
Range	Up to 100m / 300 ft outdoors		Up to 600m / 2000 ft outdoors	
Logging capacity	18.500 events with date / timestamp			
Battery Life	Up to 10 years or 1 million messages			
Temperature	Operating range -40°C to 70°C Accuracy Max. ±0.10°C (0°C to 70°C) Accuracy Max. ±0.15°C (-40°C to 0°C) Long term stability: ≤ 0.01°C /year		-40°F to 158°F ±0.18°F (32°F to 158°F) ±0.27°F (-40°F to 32°F) 0.018°F /year	
Motion detection	Accelerometer 3-axis, sensitivity 0g – 16g, programmable			
Magnet switch	Detect removal from and insertion into holder Enable or disable alarm (with SwitchHolder) Start or Stop of transport report (with SwitchHolder)			
Compatibility	EN12830:2018 Accuracy class 0.2, Software class III, storage & transport CE, EN300328, EN55022 (868 MHz) FCC, IC (915 MHz)			
Mounting	The holder is pre-fitted with very high bond double sided tape and two stainless steel screws are supplied for mounting in very harsh environments or on rough surfaces. Try to avoid mounting on metal surfaces, reinforced concrete walls, inside metal racks or cabinets.			
Casing Material	PC-ABS, easy to clean surface			
Protection class	IP67			
Accessories	SwitchHolder			
	Model 20-20-30		Model 20-20-31	
Dim.	Sensor	with holder	Sensor	with holder
Height	41mm / 1.61"	41mm / 1.61"	131mm / 5.15"	131mm / 5.15"
Width	32mm / 1.26"	33mm / 1.30"	32mm / 1.26"	33mm / 1.30"
Depth	22mm / 0.87"	24mm / 0.94"	22mm / 0.87"	24mm / 0.94"
Weight	32g	40g	37g	45g



Monitor temperature, motion and (door) contact

Meet our AiroSensor

 10 years
battery lifetime

 1,000,000
measurements

 18,500 events
logging capacity



Product Description

The SenseAnywhere AiroSensor X is like the AiroSensor T model 20-20-31 (temperature and motion) with a IP67 class connector to connect to an external dry contact. Suitable for example for monitoring doors on trailers of freezers.

Applicable in various industries



Temperature
Accurate temperature sensor.



Motion
The accelerometer is used to detect motion or shock.



Location
Arrival and departure times are automatically logged.



Realtime
24/7 data gives you a complete audit trail.



Instant alarms
Get notified via email or text when limits are exceeded.



Secure data storage
Access your data anywhere and anytime via the Cloud.



PHARMACIES



TRANSPORT OF MEDICINES



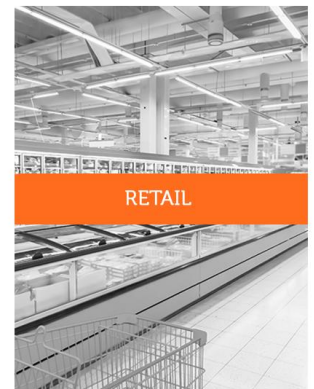
HOSPITALITY



HEALTHCARE



COLD CHAIN



RETAIL

AiroSensor

Wireless Frequency	ISM Band, 868 MHz (ITU Region 1) or 915MHz (ITU Region 2)	
Wireless Protocol	SenseAnywhere wireless protocol with automatic service discovery and seamless roaming	
Range	Up to 600m / 2000 ft outdoors	
Logging capacity	18.500 events with date / timestamp	
Battery Life	Up to 10 years or 1 million messages	
Temperature	Operating range -40°C to 70°C -40°F to 158°F Accuracy Max. $\pm 0.10^{\circ}\text{C}$ (0°C to 70°C) $\pm 0.18^{\circ}\text{F}$ (32°F to 158°F) Accuracy Max. $\pm 0.15^{\circ}\text{C}$ (-40°C to 0°C) $\pm 0.27^{\circ}\text{F}$ (40°F to 32°F) Long term stability $\leq 0.01^{\circ}\text{C}/\text{year}$ 0.018°F /year	
	Please note: do not disconnect the connector at temperatures below -25°C	
Motion	Accelerometer 3-axis, sensitivity 0g – 16g, programmable	
Connector	Rated voltage 125 V Rated impulse voltage 1500 V	Rated current (40°C) 3 A Volume resistivity $\leq 3\text{m}\Omega$
Compatibility	EN12830:2018 Accuracy class 0.2, Software class III, storage & transport CE, EN300328, EN55022 (868 MHz) FCC, IC (915 MHz)	
Mounting	Preferred mounting position is vertical. The holder is pre-fitted with very high bond double sided tape and two stainless steel screws are supplied for mounting in very harsh environments or on rough surfaces. Try to avoid mounting on metal surfaces, reinforced concrete walls, inside metal racks or cabinets.	
Casing Material	Device: PC-ABS	Connector: PA (UL 94 V-0)
Protection class	IP67 condition: mating connector placed.	
Dim.	Device	Connector
Height	143mm / 5.63 in	43mm / 1.69 in
Width	35mm / 1.38 in	\varnothing 11.5mm / 0.45 in
Depth	25mm / 0.98 in	x
Weight	56g	3g
Connector	<p>The diagram shows the connector assembly with three pins. Pin 1 is the leftmost pin, Pin 2 is the middle pin, and Pin 3 is the rightmost pin, labeled as 'do not use'. A 'Marker' is indicated on the left side of the connector housing.</p>	



Connect your sensors to the Cloud

Meet our Indoor AccessPoint

Indoor AccessPoint

The SenseAnywhere AccessPoint is an economic and reliable plug and play device that connects wireless sensors like the AssetSensor and AiroSensor to the Cloud service of SenseAnywhere.

Product Description

SenseAnywhere AccessPoints connect our Sensors to SenseAnywhere's Cloud Service. The wireless communication between the Sensors and the network is a 2-way communication. A Sensor automatically discovers SenseAnywhere AccessPoints at any given location and transmits its data to the central database and awaits a confirmation of good reception. When confirmation arrives, the message is removed from the Sensor's memory. The protocol features re-transmission attempts and duplicate packet filtering, so no event ever gets lost. Our regular AccessPoint is for indoor use.



Indoor AccessPoint

Wireless Frequency	ISM Band, 868 MHz (ITU Region 1) or 915MHz (ITU Region 2)
Wireless Protocol	SenseAnywhere wireless protocol with automatic service discovery and seamless roaming
Wired Protocol	10Mbit Ethernet 10BASE-T, TCP/IP port 80, DHCP, DNS
Connections:	
Power connector	DC plug, 5mm / 2.1mm
Ethernet connector	Shielded RJ45
Option to provide power to the AccessPoint by using an optional Power splitter / combiner cable set available as accessory.	
Power requirements:	
Voltage	5V DC
Current	175mA
Supplied power adapter has an exchangeable power plug and is standard supplied with a 2-pole Euro plug. It has a 1m DC cable	
Compatibility	CE, EN300328, EN55022 (868 MHz) FCC, IC (915 MHz)
Mounting	Preferred mounting position is vertical , hinged on a screw using the key-hole in the back. Alternatively, the AccessPoint can be hung at its cables. Try to avoid mounting on metal surfaces, reinforced concrete walls, inside metal racks or cabinets.
Dim.	AccessPoint
Height	90mm
Width	55mm
Depth	27mm
Indicator (3-colour LED) status:	
Red	Powered
Orange	DHCP resolution successful. Can communicate in the local network
Green	Connection with the SenseAnywhere Cloud; system is operational
Green blinking	Communication with Cloud is taking place
Weight	
AccessPoint	58 g
Power Supply	56 g
Complete Package	205 g

